

THIS PHOTO AND COVER PHOTO BY JIM WESTPHALEN FOR CONNOR HOMES

# GOING GREEN WITHOUT GOING CRAZY

BY DIANE M. STERRETT

From the coffee shop to the cocktail party, today's conversations revolve around energy's cost to our wallets and our planet, as well as how we can all use less of it. Since housing alone consumes 20 percent of America's energy, here's how you can get started at home in a meaningful, but achievable, way. >>

### Access Connections

Installing products such as lighting control or smart thermostats can drastically reduce your energy costs and increase convenience. Lighting control can be installed by simply replacing your existing light switches with new ones; no additional wiring is needed. Dimming your lights by 20 percent saves 20 percent of electricity used. Motorized shades allow you to control and adjust the shade for summer and winter months. You can also monitor your thermostat and control your temperature from a Web browser or easily set up a pre-programmed schedule. Access Connections designs the right system to fit your needs and helps provide a more energy-efficient, comfortable home. [www.access-connections.com](http://www.access-connections.com)



### Antique & Vintage Woods of America

Dedicated to the Green Earth concept, our major goal is to salvage and reclaim building materials from old structures and incorporate them into current projects. We offer one of the most respected and diverse inventories of reclaimed wood available. With more than one million board feet of inventory, we can supply projects of more than 30,000 square feet, for both commercial and residential buildings.



Our antique heart pine flooring is noted for its unusual hardness and its beautiful amber-orange to mellow reddish color. We hand-select each board from century-old homes, barns and gristmills to achieve a look that is bold, elegant and timeless. [www.antiqueandvintagewoods.com](http://www.antiqueandvintagewoods.com)

### Archia Homes

Serious issues with climate change have begun changing the way we live. Some people drive more efficient vehicles while others aim to lower the effect their homes have on the environment. Since the late 1980s, Archia has been involved in building healthy homes, with interior atmosphere, occupant health and material knowledge at the forefront of our building and design concerns. Moving to the larger, more encompassing environment of green building and sustainable design was an easy and obvious transition. With much of our general knowledge and objectives now becoming mainstream, we find ourselves able to offer information, education and advanced building techniques for greener, more sustainable homes. [www.archiahomes.com](http://www.archiahomes.com)



### GREEN NOISE

An ever-increasing amount of green news, building ideas and products makes one think about counting carbons instead of carbohydrates. A recent study confirmed it: all the green talk has made homeowners feel that a green home is an all-or-nothing proposition. But you don't have to be an enviro-maniac to make an impact; every single action counts.

Since there are many facets of green building, first determine your priorities. Whether it's reducing carbon emissions, reducing your energy use, improving indoor air quality, conserving water, recycling, or using sustainable materials, it helps to focus your energy. Then start with a few bite-size choices and rely on experienced builders, architects and designers to guide your plans.

The U.S. Green Building Council (USGBC) is a good place to start. It's a nonprofit organization composed of leaders from across the industry working to advance buildings that are environmentally responsible, profitable and healthy places to live and work. Chapters in nearly every state offer information and assistance.

Ready to get started? Here's a baker's dozen of great ideas.

### GET AN AGENT

If you're building a home, a great way to cut through all the confusion is to hire an owner's agent early in the process, says Connie McGreavy, chairperson of the Rhode Island USGBC chapter and founder of Conserve By Design. "An owner's agent gives you a single point of contact who knows the field, has intimate knowledge of green building materials, can coordinate vendors, will advocate for you and look out for your environmental priorities."

Say, for example, you tell your builder that you want to build a green home. He's partial to passive

### Architectural Design Incorporated

Our team of architects and consultants brings you many years of experience integrating the latest green technologies in residential and other designs with a team approach of architecture, landscape architecture, interior design, environmental and energy conservation, and construction. We are actively integrating self-sustaining, low-energy strategies into current residential projects, including solar, wind and geothermal energy systems. In addition, our design for the Mass Audubon Wellfleet Bay Wildlife Sanctuary earned LEED Platinum Certification for exemplary contributions in the areas of sustainable siting, water efficiency, energy and atmosphere, materials and resources, and indoor environmental quality. It is only the fourth building in Massachusetts to achieve the Platinum designation. [www.ad-archs.com](http://www.ad-archs.com)



### Audio Video Intelligence

AV-Intel can integrate your lighting, heating, cooling and entertainment controls with Control 4 home automation, letting everyone in your family be green and significantly reduce their energy consumption. You program the system according to your lifestyle, and it automatically adjusts lights and temperature at the appropriate times, whether you're home, at work or away on vacation. It's all accessible by touch panels or remotely via the Internet. One touch of a button in the kitchen, and your lights dim for dinner or come on full power for cleanup mode. One touch as you're leaving, and it turns off all the lights and any TVs or stereos left on. And with Control 4, you never come home to a dark house! [www.av-intel.com](http://www.av-intel.com)



### Austin Design Inc.

Austin Design specializes in green design—from the second LEED Gold Certified affordable house in the nation, to high-end custom homes, both modern and traditional. Buildings are designed to be beautiful, sustainable, on the cutting edge technologically, and to fit the client's needs, personality and budget. Austin Design works with clients to find an affordable approach to sustainability. Through proper air-sealing, super-insulation, on-site energy generation, indoor air quality and the use of local chemical-free materials, the company creates healthy, environmentally conscious homes. "When building, sometimes the greenest design moves are the simplest," says Bill Austin, principal. [www.austindesign.biz](http://www.austindesign.biz)



solar power, so he automatically cuts down your trees to let the sun in, when your site might have been better suited for geothermal energy. Another vendor's priority might be to sell you a system, not offer options.

"An owner's agent can evaluate your site and recommend what's best for you. They know who needs to be involved depending on your environmental priorities and are skilled in putting a team together. It saves you frustration and money in the long run," McGreavy says.

**“Look for a design and construction expert with a long track record in sustainable building”**

The team she refers to includes your architect, civil and mechanical engineers, builder and energy systems people, and it's the keystone of an integrated design approach. That approach is the single most important concept in building green, says McGreavy.

"We have to get away from the classic linear approach to home building. If you have everyone working together from the outset, each area of expertise helps inform the others, which reduces the need for costly changes along the way."

To find an owner's agent, look for a design and construction expert with a long track record of experience in sustainable building, or contact your USGBC chapter. Nearly all of them have a green residential building advocate, McGreavy says.

 **THINK ADVANCED BUILDING DESIGN**

If you're building new, the single

### Belisle Doors and Windows

An environmentally friendly company, Belisle crafts high-end all-wood doors and windows that add beauty to your home while saving on your energy bill.

“All our windows and doors exceed Energy Star ratings, built with double panes filled with argon gas for a higher insulation factor, and coated with low-E film to block the sun’s rays,” says Kevin Thibault, sales director. “We don’t use vinyl, plastic or other materials that are not environmentally friendly. We use only wood species that are easily renewable, such as western red cedar and red oak, and we purchase only from lumberyards that certify their wood is from renewable sources. In addition, we give our byproducts (sawdust) to area farmers to use so there is less waste, and dispose of brushes and rags in a responsible manner.” [www.belislewindows.com](http://www.belislewindows.com)



### Berkshire Photovoltaic Services

Since 1985 BPVS has worked with residential and commercial customers, utilities, government agencies and research projects to design and build safe, efficient and durable photovoltaic systems. Our designs exceed code requirements to ensure user-friendliness and reliability. We use Schott Solar modules made in Massachusetts, the world’s most powerful modules. Built for New England weather extremes, they are rated for our worst wind and snow loads and include features that assure optimal electricity production. BPVS is recognized for careful designs, proven components and high-quality workmanship. Our commercial and residential customers know that being consumers and generators of clean electricity is important, and they rely on our technical expertise to make it easy. [www.bpvs.com](http://www.bpvs.com)



### Cathy Kert Interiors

We create stylish, comfortable spaces to call your own with a full range of home decorating services. As we partner with our clients to embellish their homes, we are excited to offer natural, environmentally friendly Lee furniture made in the United States. Lee uses organic and natural fabrics and water-based finishes. And who says luxury bedding can’t be eco-friendly? We also carry Mystic Valley Traders’ Turtle Bay Collection, made from natural, sustainable and replenishable fibers. All dyes are chemical-free and meet certified global organic standards so you can feel good and sleep well.

We are also an Exciting Windows member and can help you choose the right window treatments to control heating and cooling naturally!

[www.cathykertinteriors.com](http://www.cathykertinteriors.com)



best thing you can do is emphasize “conservation first” through an advanced building design, says Dan Glickman, founder of Sustainable Construction in Boston. It’s only logical that the first step in building green is not to let heat and conditioned air escape through an inefficient, leaky building.

“Build a tighter envelope, use super-efficient framing and insulation methods and the most efficient windows and doors that you can. It’s easy now to build a wall that is extremely well-insulated. And you should consider a framing strategy to minimize thermal conductivity; the old two-by-four construction and fiberglass insulation is history,” he says.

Thermal conductivity happens when a structural member, such as a wall stud, is allowed to bridge indoors and outdoors, conducting heat with it. You can minimize that with staggered two-by-six wall construction that does not allow a stud or header to create a bridge to the outside.

Similarly, thermal bypass occurs any time there’s a gap in your insulation that allows air to enter or leave. So for insulation, Glickman uses a combination of closed-cell foam insulation for an airtight barrier and open-cell foam insulation, which is easier to work around if you ever want to make a change to your wiring.

Other innovative green insulations to consider are Warmcel 100, made from 100 percent recycled newspapers, and Thermafleece, made from pure British sheep’s wool. Both are nontoxic and use less energy to manufacture than traditional insulation.

The next step in advanced building design is your heating and air conditioning point of use and distribution strategy. “You have to look at how you get heated or cooled air to your rooms efficiently and how to keep it there. If a duct or piping is

### Chip Webster & Associates

Architecture must respond to the human needs of comfort, functionality and security while fostering a sense of well-being. At Chip Webster & Associates, we ensure that physical, social and budgetary needs are met while creating spaces that surprise, delight and inspire. Chip Webster & Associates actively pursues green design projects, and we encourage our clients to consider sustainable design options. We have LEED-accredited associates on our team to support these goals. We believe that every project is unique and requires a fresh perspective that will reflect the needs and desires of the client. Utilizing an underlying design philosophy rather than a preconceived architectural style, we help bring our clients' visions to life. [www.cwa-arch.com](http://www.cwa-arch.com)



### Closet Factory—Boston

The ultimate custom storage design not only keeps you organized, it helps keep your environment healthy. We use low- or no-VOC finishes, which means no toxic off-gassing and a better home air quality for you.

And since we custom-design each storage solution, we can use the materials you desire, from basic white to dramatic wood grains. Using Forest Stewardship Council-certified woods means our lumber is harvested in an environmentally responsible manner.

Precision craftsmanship and our trademark attention to detail enhance the look of your Closet Factory system, whether for a walk-in closet, a pantry, or even an entertainment center. Contact us for your free in-home consultation at (800) 617-2567. [www.closetfactory.com](http://www.closetfactory.com)



### Coneco Geothermal

Use the free, renewable energy in your own backyard for heating, cooling and hot water with an earth-friendly geothermal system. You could save up to 70 percent on monthly energy costs.

Coneco's geothermal engineering experts can guide you to the right solution for your home, from early consultation to the final installation and maintenance of the heat pump. As a turnkey geothermal systems firm, Coneco manages each step of the design and installation of your system, including drilling/trenching, radiant floor heating, ductwork, electrical, plumbing and system start-up. A system can be configured for either new construction or for your existing home. [www.coneco.com](http://www.coneco.com)



planned to go through an uninsulated area, change it. And add zones to your system so you can avoid heating rooms that are not often used. Or if you're putting on an addition, add a pellet stove for the new space," Glickman says.

The third element of advanced building design is a super-efficient heating/cooling system. "Today's heating and cooling systems are so much more efficient than just a decade ago," Glickman says. "Then if you've done those first three steps,

**“Heating and cooling account for about 56 percent of the energy use in a typical home”**

alternative fuels can make a dramatic difference. Do a cost/benefit analysis and consider your site characteristics and see if solar, wind or geothermal make sense.”

### HEAT AND COOL EFFICIENTLY

Since heating and cooling account for about 56 percent of the energy use in a typical home, looking into your heating and air conditioning efficiency is a great first green step to take, even if you're not building a new home. Randy Scott, vice president and general manager of Ideal Home Environment for Trane, agrees. "A twelve-year-old heating system is probably running at 60 percent efficiency," he says.

For your furnace, Scott suggests looking for a high annual fuel utilization efficiency (AFUE), which measures the amount of heat actually delivered to your house compared to the amount of fuel used. For exam-

*Continued on page 168*



### ZERO IMPACT IN NORTH EASTON

This contemporary home in North Easton, Massachusetts, was the first in the state to receive LEED Silver certification. Designed by Maryann Thompson Architects and built by CDS Construction Service, the 3,000-square-foot scheme features a simple box form with expansive windows. The home's south-facing orientation takes advantage of natural light and, in the winter months, solar gain reduces mechanical heating demands. (Two pellet stoves and an efficient, solar-powered radiant heat system take care of the rest.) An asymmetrical roofline shades upstairs rooms in the summer, and cross-ventilation eliminates the need for central air conditioning. Recycled and energy-efficient materials used in the house include a recycled tire rubber roof; reclaimed hardwood cabinetry, casework and flooring materials; recycled glass tiles and thermal efficient windows.





PHOTOS BY CHARLES MAYER

### Connor Homes

Connor Homes continually weighs the environmental impact of the materials and methods we use. Homes built in our mill shops create far less waste materials than site-built construction, saving material from the landfill and saving construction costs. Sustainability of resources is another important piece of our green building philosophy. It is our sincere belief that durability, allowing a home to sustain itself on the landscape, is one of the most important ways a home can be a positive force. Our homes use only structural components that have withstood the test of time so that, given routine maintenance, they will endure for generations and not have to be rebuilt in fifty years or less. [www.connorbuilding.com](http://www.connorbuilding.com)



### Crown Point Cabinetry

Crown Point Cabinetry, a family owned and operated custom cabinetmaker, introduces period-style cabinetry crafted from FSC-certified antique woods. Carefully and responsibly reclaimed from old barns, factories and textile mills destined for demolition, these woods are hand-selected for their strength, durability and timeless beauty. Antique heart pine, antique chestnut and antique oak boards with authentic nail holes, knots and color variations are repurposed into stunning furniture-quality cabinetry while preserving the beauty of centuries-old wood. [www.crownpointcabinetry.com](http://www.crownpointcabinetry.com)



### Custom Cable Services

Of all your home technologies, televisions are one of the biggest energy draws because they're never fully switched off, spending most of their time in a standby mode. Multiply that by several televisions and the problem adds up quickly. The International Energy Agency estimates that 5 to 15 percent of your electricity is wasted in standby mode, costing U.S. households more than \$5 billion a year. Custom Cable Services can help you be more eco-friendly and save money by installing a switching device for proper power management.

In addition, we seek out and recommend technology products that are Energy Star-rated and companies that implement good green policies.

[www.customcableservicesinc.com](http://www.customcableservicesinc.com)



*Continued from page 160*

ple, a furnace that has an 80 percent AFUE rating converts 80 percent of your fuel to heat; the other 20 percent goes up the chimney. The U.S. Department of Energy (DOE) has set a national minimum of 78 percent for new boilers manufactured since 1992. To achieve Energy Star status, a furnace must have an 85 percent rating, but there are many models that exceed 90 percent.

“Trane has products that go up to 96.7 percent AFUE. You can save up to 35 percent of your gas bill, depending on the efficiency of your home’s construction,” Scott says.

To measure cooling effectiveness when comparing air conditioners, look for the unit’s seasonal energy efficiency ratio (SEER).

“DOE’s minimum is 13 SEER. A ten-year-old system is probably an eight, significantly below today’s minimum. Today Trane has products that will reach up to 20 SEER. You could save up to 60 percent on your energy bill by replacing an old system while addressing the comfort and health of the home,” Scott says.

### INSTALL A GREEN ROOF

An interesting green choice popular in Europe and just beginning to catch on here are green roofs. They really are green, covered with native plants that help keep your heat in during the winter and cool your house in the summer.

Beyond reducing your energy bill, they help improve air quality almost immediately, says Karen Weber, co-president of Earth Our Only Home. The company worked on three new green roofs in the Boston area this year: the WGBH headquarters in Brighton and Aircuity Inc. and a residential green roof, both in Newton.

“Green roofs absorb carbon dioxide and pollutants almost immediately after planting—in the first three to five years—while producing life-giv-



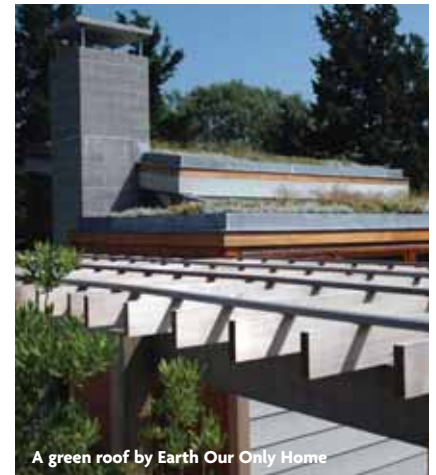
**Ponders Hollow**  
 Custom Moulding & Flooring

*Our Family Serving  
 Your Family Since 1954*

413.562.8730 | WWW.PONDERSHOLLOW.COM | WESTFIELD, MA

ing oxygen. More green roofs will decrease greenhouse gases faster, bring the air temperature down and impact our quality of life. Twenty-three thousand square feet of green roof can absorb one ton of carbon dioxide. Plus, they help manage storm water and keep freshwater runoff from polluting the ocean,” Weber says.

One misperception Weber would like to clear up is that a green roof is not turf—you don’t have to mow it. While there are several plants you



A green roof by Earth Our Only Home

can use, Weber says sedums work best because they are succulent perennials that can last 90 days with no water, so they don’t need additional irrigation, and can handle freezing.

A more intensive green roof can have a thickness of 9 inches or more with a variety of plants and small trees, resembling a beautiful park on top of a building, like Chicago City Hall’s famous installation.

### GROW A SUSTAINABLE YARD

A green choice you’ll enjoy looking at every day is a sustainable landscape, which can make a big difference in using resources more responsibly. The technical term for it is xeriscaping, defined as landscaping that conserves water and protects the environment, says Sean Papich of Papich Landscape Architects in Hingham, Massachusetts.

### Cutting Edge Systems

Cutting Edge Systems has been designing and installing energy-efficient automation systems for nearly twenty years. Lighting control can make your system extremely convenient to use and offers a great solution for reducing energy usage. Dimming incandescent lights by 25 percent saves 20 percent of the energy and also extends the bulb life by four times. Controllable shades improve your room's aesthetics while reducing heating/cooling costs and protecting your fine furnishings from fading. The company's systems feature Lutron lighting control to automatically turn lights off when no one is at home, giving you light when you need it and energy savings when you don't for earth-friendly convenience. [www.cuttingedgehome.com](http://www.cuttingedgehome.com)



### DC Home Systems

Electronics are typically thought of as consuming energy, but home automation systems can actually control energy costs. DC Home Systems can help you put the right technology in the right place to monitor, manage and reduce your energy use. For example, sophisticated occupancy sensors can turn lights and heat on and off depending on your schedule. Tie in daylight-harvesting keypads, and your system adjusts artificial light levels depending on how much natural light is available. Add a resource monitor to measure consumption of electricity, water and gas, for different items at different times of day, and you have all the data you need to make smart energy decisions. [www.dchomesystems.com](http://www.dchomesystems.com)



### Design Lighting & Electrical Supplies

Design Lighting in North Andover, Massachusetts, offers many energy-efficient products, whether you are considering compact fluorescent lamps and fixtures or ultra-efficient LED lighting. We also carry Hinkley's Energy Star-certified lighting fixtures, which meet strict energy-efficiency guidelines set by the U.S. Environmental Protection Agency (EPA) and the U.S. Department of Energy (DOE). Each fixture combines a compact fluorescent bulb and socket with a photocell that prevents the fixture from staying illuminated during daylight hours, maximizing its energy-saving potential. Visit us, and our experienced staff can help you choose the right products for your home. [www.designlt.com](http://www.designlt.com)



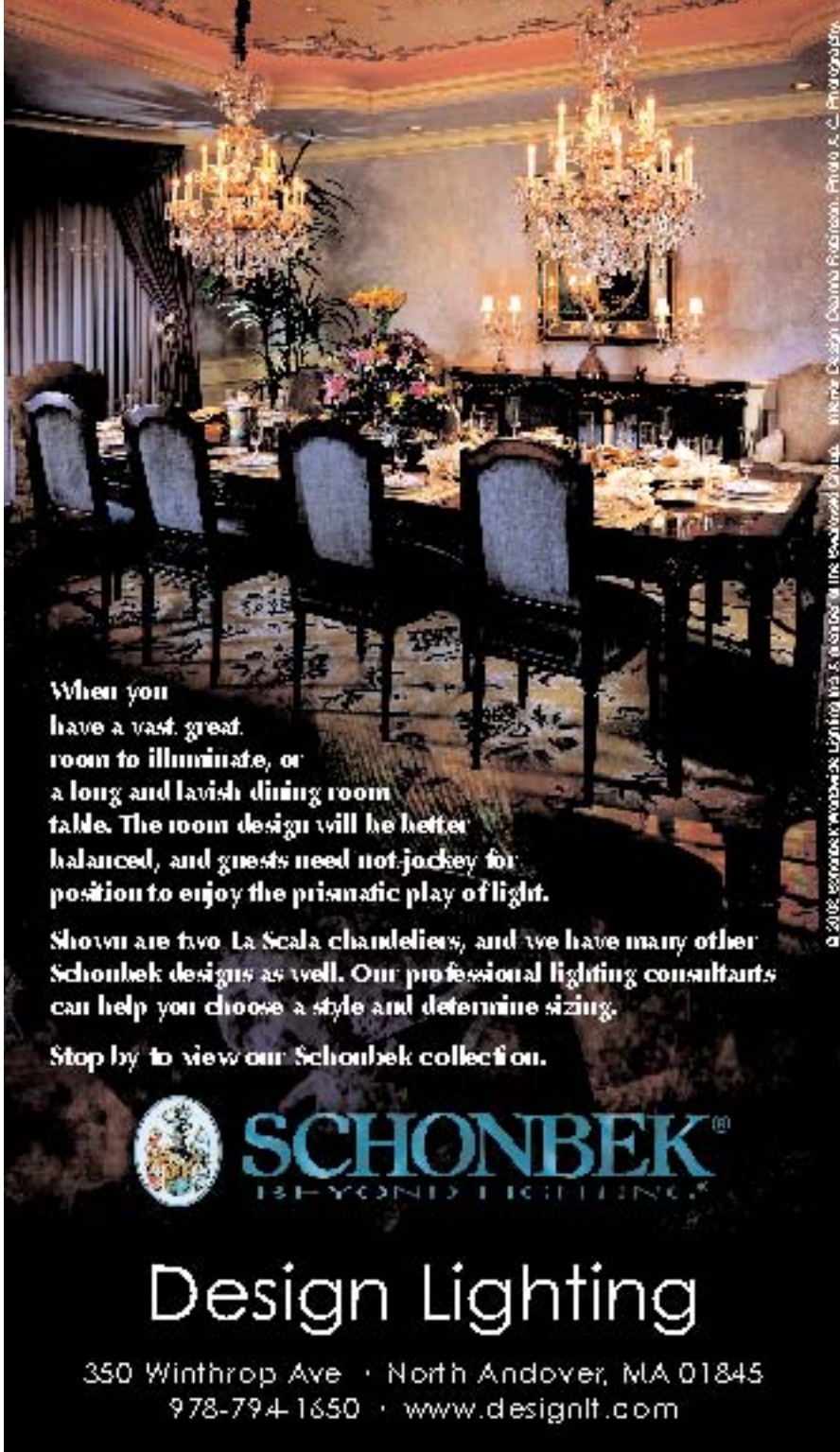
“Good planning, along with appropriate native plant selection and limited turf, are the top three of seven xeriscaping principles,” says Papich, who began working with xeriscapes in the early nineties. “You have to start with the right design using the right plants in the right place. For example, use plants that can tolerate sun in hot spots so you don't need to overwater. Minimize use of annuals, which require a lot of watering, and use native perennials that are tough and hardy. Once they're established, you can shut off the irrigation. And limit the amount of lawn you have, using it just for recreational purposes or maybe as art, in a perfect square or circle.”

We love our lawns, but they are the biggest water hog in the yard. Bluegrass seed is the most popular type, but it requires the most water. Consider alternative turfs such as zoysia, which is very drought tolerant, but can get very brown. Papich uses a mix of bluegrass with fescue and rye, which require less water and take quickly.

Additional xeriscaping principles include improving your soil so you're not using too much fertilizer, and using a natural wood mulch to retain moisture, like a simple shredded pine bark. Red and black mulches have chemical dyes that are inappropriate for a sustainable landscape. Xeriscaping also requires a well-planned, efficient irrigation system with different zones for lawn and flower beds. Set the volume to low and time it for early morning. The last principle is appropriate maintenance, weeding and pruning to keep plants in good condition.

“People are starting to get it, but the biggest challenge is overcoming the stereotype of what a New England landscape ‘should’ look like, because people are so used to fussy landscapes and manicured shrubs that need constant maintenance.

# When are two Schonbeks better than one?



© 2008 Schonbek Lighting Inc. Photos by the author. Home Design, Paula Friedman, Photo: S. C. Photographs

When you have a vast, great room to illuminate, or a long and lavish dining room table, the room design will be better balanced, and guests need not jockey for position to enjoy the prismatic play of light.

Shown are two La Scala chandeliers, and we have many other Schonbek designs as well. Our professional lighting consultants can help you choose a style and determine sizing.

Stop by to view our Schonbek collection.



**SCHONBEK**<sup>®</sup>  
BEYOND LIGHTING

## Design Lighting

350 Winthrop Ave • North Andover, MA 01845  
978-794-1650 • [www.designlit.com](http://www.designlit.com)

Xeriscaping actually needs less maintenance," Papich says.

One misconception is that the sustainable plant list is limited to yucca and cactus, but Papich offers a long list of hardy native perennials, shrubs, trees and ornamental grasses that fit the bill. From black-eyed Susans and coreopsis to shrub roses, spirea, kousa dogwood, lacebark elms and native cedars, there's a plant for every corner of your garden.

### BUILD A GREEN DECK OR PATIO

While you're planning your sustainable yard with your landscape architect, don't forget the hardscape: walls, decks, patios, arbors and trellises.

"Everything we do is sustainable by nature of our job. As landscape architects, we've been on the sustainable kick for the last hundred years; everyone else is just catching up," says David Bartsch of Bartsch & Radner Design in Boston and Nantucket, Massachusetts.

Using natural materials such as stone in landscapes gives them a green advantage, although one thing to keep in mind is where your stone

**“Using natural materials such as stone in landscapes gives them a green advantage”**

comes from. "We work to source things as locally as possible, not only to cut transportation costs, but to use resources responsibly and cut carbon emissions from having materials hauled across the country," Bartsch says.

Using woods certified by the For-

*Continued on page 180*



### LEED ON LAKE CHAMPLAIN

Vermont's third LEED-certified home is tucked away in Colchester on Lake Champlain. Designed and built by Connor Homes, the 3,883-square-foot house was panelized and precut in a local factory before being delivered to the site, a construction method that reduces the impact on the environment and saves on wood materials and on-site labor time. In fact, more than 40 percent of the 1.44-acre lot was left undisturbed during construction. Efficiency Vermont designed the landscaping, planting trees, shrubs and drought-resistant turf seed to shade hardscapes, aesthetically root the house and minimize soil erosion. The rear portion of the lot was left to wild grasses as a transitional habitat between the house and woodlands. Energy-efficient Marvin French doors and windows allow access to the outdoors from almost every room of the house.





THIS PHOTO AND THE PHOTO ABOVE BY JIM WESTPHALEN FOR CONNOR HOMES



### Dover Rug

For three generations, the Jafri family has been designing, weaving and exporting fine wool rugs and carpeting from Pakistan, India and Nepal. By the nature of our product, and because we follow centuries-old traditions, we have been green since our inception. From the sheep to your living room floor, there is nothing synthetic about our materials or process. It starts in a rural village where the sheep are sheared, their wool handspun into yarn, dyed with vegetable and food dyes, and hand-knotted by local weavers onto a 100 percent cotton foundation. The result is an exquisite, one-of-a-kind product that will last for generations, making it a much more sustainable choice. [www.doverrug.com](http://www.doverrug.com)



### Early New England Homes

We design and build homes that recall our rich colonial heritage, built in harmony with the countryside using time-tested sustainable building practices. The mills that we purchase lumber from exclusively practice sustainable forestry methods. Every production step is geared to minimize waste. In the planning stages, careful consideration is given to positioning a new home to make best use of natural weather buffers and the warmth and light from the sun. Material choices are based on effectiveness for enclosure from weather, degree of insulation, aesthetic appeal and, most important, sustainability. In the end, the home's size, shape and beautiful appearance are the result of natural resources and our understanding of them. [www.earlynewenglandhomes.com](http://www.earlynewenglandhomes.com)



### Edward R. Stephen Company

Edward R. Stephen is a plumbing and heating product supply company specializing in high-efficiency equipment as well as solar solutions.

For example, we offer two Energy Star-rated boilers: the Peerless Purefire, a gas-fired condensing boiler for either natural or LP gas that delivers 95.85 percent efficiency, and the Peerless Pinnacle for oil, which delivers more than 93 percent efficiency.

We offer cutting-edge solar solutions for heating and ventilation, whether for an individual room or the whole house. We also offer an array of SolarSheat air collectors that can be used to retrofit any forced-air furnace and existing ductwork. Call us for a custom solution.

[www.erstephen.com](http://www.erstephen.com)



*Continued from page 174*

est Stewardship Council (FSC) for your deck or trellis may be a bit more expensive, but Bartsch is working to educate clients that it's more sustainable, too. The FSC is an independent nonprofit established to promote the responsible management of the world's forests. Products carrying the FSC label are independently certified to assure consumers that they come from forests that are managed to meet the social, economic and ecological needs of present and future generations and are harvested responsibly.

"We are sustainable in every aspect of landscaping, from the master planning down to the detail of glues and adhesives used. We don't just design; we specify how things get built and act as the client's representative with the builder," Bartsch says.

While you're planning, look into the new eco-friendly composite decking products to see if they're right for you. One example, sold under the brand name Terratec Naturals, is made from rice hulls and recycled plastic. Rice hulls are ideal because they are an abundant and renewable agrifiber that requires no additional farmland for production. And because of their inherent natural properties, the decking contains no added preservatives or biocides, as in wood-based composites.

### CAPTURE RAINWATER

You can use April showers all year long and use water resources more sustainably when you capture rainwater. The fast, easy solution is to connect a downspout to a rain barrel to collect rain, then use it to water your plants and save on your water bill. It's especially helpful during a summer water ban, and some municipalities even have rain barrel rebate programs in place.

According to the New England Rain Barrel Company, only a quarter-

### Gardner Woodwrights

For Gardner Woodwrights, green starts at home—our home. For our new offices, we worked with our design team to use many green principles and products, exploring green ideas for our own use as a way to be able to recommend them to our clients. That includes using all zero-VOC, zero-carcinogen Mythic

Paints, sustainable cork flooring for the kitchen and copy room, and low-flow WaterSense bathroom fixtures to conserve water. We designed specifically around the use of salvaged and leftover materials, such as tile and flooring, to avoid filling up the landfill. Reduce, reuse, recycle is the mantra here, as we donated extra molding to South County Habitat for Humanity's ReStore.

[www.gardnerwoodwrights.com](http://www.gardnerwoodwrights.com)



### Interactive Home Systems

Interactive Home Systems can help you reduce your energy bill and your carbon footprint with an automated home technology system. By controlling your heating and air conditioning based on time of day or outside temperature, you're not wasting energy when you don't need it. For example, hot water heaters use 14 to 25 percent of a home's energy, according to the DOE. To conserve energy, our systems can turn off or set back hot water temperatures in your water heater based on timing or occupancy.

And since it's all controlled through one easy-to-use interface, it's convenient, too. For fifteen years, Interactive Home Systems has been coordinating all the home's technology needs, including security, audio/visual, computer networking and telephone. [www.ihomesys.com](http://www.ihomesys.com)



### Kitchen Views Custom

With cutting-edge products and a focus on green design, Kitchen Views Custom designed its new Newton location using all eco-friendly materials. That includes the beautiful IceStone countertops made from recycled glass and concrete (pictured at right) and Corsi cabinetry made with bamboo, which are both stylish and environmentally friendly. The showroom also features state-of-the-art displays created by Kitchen Views' award-winning design team. With an eye toward the future, this must-see showroom incorporates universal design elements in many displays. Shelving in one display can be easily reached from a seated position; a fully accessible vanity with a contemporary Asian flair is another showroom "wow" factor with concrete countertop and sink.

[www.kitchenviews.com](http://www.kitchenviews.com)



inch of rainfall runoff from the average roof will completely fill the typical barrel. The company's formula: one inch of rain on 1,000 square feet of roof yields 623 gallons of water, enough to water a 25-by-10-foot lawn for a month.

Or, you can get more sophisticated by connecting all your downspouts together with pipes linked to a big cistern buried underground and equipped with a pump to send the collected water through your irrigation system. An experienced irrigation en-



Xeriscaping work by landscape architect Sean Papich

gineer or landscape architect can help you design a system for your site.

Bartsch & Radner Design's work at a Nantucket school ground includes plans to install a rainwater capture system. For this system, they will connect the downspouts to a just-above-ground-level water tower, using gravity flow to deliver water when needed. The cistern will be an interesting vertical element in the landscape, and will make a great teaching aid, too.

### CHOOSE GREEN PRODUCTS

With many exciting new products on the market, you can increase the green factor of every room in the house depending on your green priorities. To improve air quality, use low- and no-VOC paints such as Benjamin Moore's Aura. To conserve water, choose low-flow fixtures in the kitchen and bath. To help save natural resources, choose furniture and flooring made with FSC-certified woods or reclaimed woods. Or, to

### LaBarge Homes

LaBarge Homes, a general contracting business specializing in custom homes, has been providing high-quality green building, hurricane-resistant construction and Energy Star-rated homes since 1996. LaBarge, an NAHB Certified Green Professional, uses Insulated Concrete Forms (ICF) to create beautiful homes that honor all architectural styles while providing an energy-efficient home, with greater design flexibility, comfort and aesthetic advantages than conventional construction. Insulated Concrete Form construction provides structural stability and a healthier living environment while reducing energy consumption by approximately 40 percent. While ideal for high wind oceanfront home sites, ICF can be used for all energy-efficient homes, additions and pools. [www.labargerealestate.com](http://www.labargerealestate.com)



### Massachusetts Energy Star Homes Program

Many standard homes today lack energy-efficient performance features—features that can save homeowners thousands of dollars in energy costs and significantly increase the comfort of a home. Energy Star-qualified homes incorporate these features, such as efficient heating and cooling equipment, tight ducts, enhanced insulation and air sealing, to meet the U.S. EPA's strict energy efficiency performance guidelines.



The Massachusetts New Homes with Energy Star program, sponsored by local electric and gas utilities and energy efficiency service providers, promotes construction of Energy Star-qualified homes, and offers incentives to homebuilders who construct such homes in Massachusetts.

[www.massenergystarhomes.com](http://www.massenergystarhomes.com)

### NSTAR

As a green leader in Massachusetts, NSTAR is proud to offer customers innovative ways to contribute to a cleaner environment. Customers can help support the development of renewable energy by participating in NSTAR Green, the newest customer option that is adding wind energy to the region's electricity grid. NSTAR also offers many innovative Energy Efficiency Programs aimed at helping customers save energy, money and the environment. To learn more about NSTAR's Energy Efficiency Programs and commitment to the environment, visit [www.nstar.com](http://www.nstar.com)



save on the gas and electric bill, choose Energy Star appliances.

Suzi Kaitz, vice president and general manager of Kitchen Views, brings an optimistic perspective to greening the kitchen. "The key is, everybody's trying, everybody's looking for ways to save the planet. So while having more choices may seem confusing, it is easier than ever to find green products. You no longer have to search far and wide for countertops made from recycled materials, for example," Kaitz says.

If green cabinetry is your choice, Kaitz recommends looking for the Kitchen Cabinet Manufacturers Association (KCMA) Environmental Stewardship Program (ESP) seal. It was created to help consumers easily identify environmentally friendly products. After meeting certification requirements for air quality, environmental stewardship and resource management, cabinet manufacturers can display the ESP seal on their products. Look for details at [www.greencabinetsource.org](http://www.greencabinetsource.org).

Kaitz is very excited about a new line of cabinets she's bringing to Kitchen Views because of its green credentials. "Crystal Cabinets go above and beyond the minimum green standards, and that's what our customers are looking for," she says. Every aspect of Crystal's Green-Quest cabinet line is eco-friendly, from the boxwork to the facings and finishes, made with no added urea formaldehyde, 100 percent recycled materials, low-emitting finishes, and rapidly renewable components.

### AUTOMATE FOR ENERGY SAVINGS

Another idea for greening up inside is a home automation system. Tying all your home systems—lights, heat, air conditioning, entertainment, irrigation—together on automated schedules can make your home more efficient as well as reduce energy use

### Out of Orient

Our furniture from Indonesia is handcrafted by skilled craftsmen and artisans. Special skills and patience are prerequisites when constructing furniture from solid reclaimed teak. Reclaimed wood comes from various homes and buildings that are between 50 and 200 years old. The wood is carefully treated and refinished to give it a renewed life while observing ancient joinery methods. Reclaimed wood saves trees. It is also less likely to warp, expand or contract. This makes it a more durable and environmentally friendly choice. Enjoy the relaxing style of the Balinese and save the earth. [www.outoforient.com](http://www.outoforient.com)



### Pastiche of Cape Cod

Pastiche of Cape Cod offers comprehensive design services for residential and commercial interior design as well as custom botanical design, styling and staging. Owner Irina Weatherley-MacPhee has also introduced green design services, creating custom pieces such as the bench pictured here using reclaimed woods and low-VOC paints. Irina finds inspiration in personal stories and collections, and strives to improve her clients' quality of life through design and the use of eco-friendly materials. [www.pasticheofcapecod.com](http://www.pasticheofcapecod.com)



### Polhemus Savery DaSilva Architects Builders

We promote an ethic of thoughtful sustainability with all our clients, leading to an increased willingness to accept ideas about light, siting, context, durability and conservative use of resources. Responsible approaches to these issues are primary principles in our design and construction philosophy. We are also committed to a definition of sustainability that is much harder to quantify but is equally important. For a building to be truly sustainable—to be useful and beloved through generations—it has to be based on more than merely fashion or blind adherence to a certification system. In addition to being worthy on technical and functional grounds, if it isn't beautiful, it isn't sustainable. [www.psdab.com](http://www.psdab.com)



when you're not there.

One exciting new product in the automation arena is the Lutron Sivoia QED system to automate your shades and drapes. You can integrate it with Lutron lighting controls, or with other systems such as security and climate control, to maximize the entire home's efficiency, according to Leslie Mark of DC Home Systems.

"These Sivoia shades give the optimum balance of reflectivity, absorption and transmittance, controlling the amount of daylight depending on

**You're not alone in wishing for help to green your home"**

outdoor temperature or time of day," Mark says. "The programming is very flexible. In the past, these shade fabrics used PVC, which gives off VOCs. Sivoia shades use fabrics that are low- or no-VOC, plus they're really beautiful designer fabrics."

### HIRE A GREEN EXPERT

You're not alone in wishing for help to green your home. Jess Lerner of Green on the Inside has made it her business to help homeowners cut through the confusion and the science-speak. As a Brown University graduate in environmental studies working on the issue of toxins in the home, she found that friends and acquaintances were constantly calling her for green advice.

"They'd call and say, 'I'm redoing my kitchen, where do I find formaldehyde-free cabinets? And how do these everyday chemicals affect my health?' If I didn't have the answer I would research it for them. I found a lot of confusing information, and many books contradicted each

### Ponders Hollow Custom Moulding & Flooring

Ponders Hollow is a family-owned business located in Western Massachusetts offering custom-milled architectural moulding and solid wood flooring.

We are now proud to be a member of the Forest Stewardship Council (FSC). The FSC is a nonprofit organization devoted to responsible management of the world's forests. FSC members use a chain-of-custody system that allows the end user to track a certified product throughout the manufacturing process, including the forest it grew in.

With four generations in the wood industry, we are committed to using local resources and offering earth-friendly alternatives.

[www.pondershollow.com](http://www.pondershollow.com)



### RiverBend & Company

RiverBend focuses on all types of high-quality appliances including the new ultra-energy-efficient Liebherr SBS245, a five-temperature-zone refrigerator with built-in wine storage. Liebherr is a leader in green refrigeration and the first appliance manufacturer to remove CFCs completely from the production process.

"We also carry Miele products, which are high quality and very green," says Donna Spanos, co-owner. "We feel good about selling these appliances because they are good for the environment. Their energy savings, longer lifespan and their higher level of performance ultimately result in fewer replacement costs for either the appliance itself or the items you put in it."

RiverBend offers qualitative consultations to define the right products for the lifestyle needs of its clients. [www.riverbendandcompany.com](http://www.riverbendandcompany.com)



### Runtal North America

For years, Runtal has been the favorite among architects and designers, but today those in the green movement appreciate the other aspects of Runtal more than ever: durability, energy efficiency and cleanliness.

Runtal's unique flattened tube design, combined with a rugged all-welded steel construction, allows for significantly increased heat transfer. In addition, a well-designed Runtal system allows for a smaller boiler and pump, and usually less piping. All this adds up to a green, comfortable, attractive and efficient heating system for surprisingly little more than the old-fashioned kind.

[www.runtalnorthamerica.com](http://www.runtalnorthamerica.com)



other. I started wishing there was one place to get all the answers," she says. And a business idea was born, putting her research training to work.

Today Brookline, Massachusetts-based Green on the Inside specializes in helping people throughout New England create healthy and sustainable living and working spaces through home consultations and research. You start by filling out a questionnaire to determine your green priorities, then Lerner comes for a home tour. She reviews both toxins and health in the home as well as sustainability and the use of eco-friendly materials. You choose the depth of involvement, whether having her check your home from top to bottom, offer suggestions for a greener renovation project, or just review your cleaning products and offer healthier alternatives.

"People's priorities for sustainability are shifting, and health is a strong motivator. Many green campaigns focus on saving the earth, but when you think about saving your own health it changes your consciousness," Lerner says.

### TAKE ADVANTAGE OF CREDITS & REBATES

There are many financial avenues that can help offset the cost of investing in more energy-efficient technologies. For one, residential solar systems just became more affordable, thanks to Congress's financial bailout package last fall. The bill extended the tax credit that would have expired at the end of 2008, and removed the \$2,000 cap. Now homeowners can deduct a full 30 percent of the entire project, minus any state rebates, says Doug Hannah, co-president of S+H Construction in Cambridge, Massachusetts.

"This dramatically reduces the costs and hastens the payback to homeowners for solar PV (photovoltaic) and solar thermal installa-

### S+H Construction

S+H Construction offers sustainable remodeling backed by a full-service, award-winning general contracting company with more than 30 years of experience. Our Green Building Program partners with designers and clients on a range of projects, from kitchens inspired by sustainability to LEED-certified new or renovated homes. The team integrates green practices with years of professional experience in high-end comfort, high-end durability, historic restoration and cutting-edge building technology. Our Renewable Energy Division designs and installs solar electric, solar hot water, and geothermal HVAC systems and offers energy management consulting. Our Landscape and Sitework division offers sustainable elements such as permeable pavement, shade tree installation and rainwater harvesting systems. [www.shconstruction.com](http://www.shconstruction.com)



### Sage Builders

For over a decade, Sage has been working with clients to make design and construction decisions that reflect our concern for the stewardship of our natural resources. We believe that truly green building must focus on energy efficiency and durability. We understand the importance of insulation and air sealing to reduce heating and cooling demands and costs. In addition, high-efficiency HVAC equipment and lighting programs, moisture management, and performance testing during construction are all part of our integrated, comprehensive approach to creating a comfortable, healthy home with reduced energy demands. Put Sage's vast knowledge and experience to work for you. We'll be your partner every step of the way. [www.sagebuilders.com](http://www.sagebuilders.com)



### Sean Papich Landscape Architecture

We are a landscape architecture and site planning firm with a specialization in sustainable design, creating meaningful places where people live, work and play with less impact on the environment. We use our earth-friendly design experience to help guide clients to be as green as they want to be, whether it's selecting a hardy, drought-tolerant plant palette or coordinating design of a multi-zone irrigation system. Understanding each project's unique microclimate helps us design New American landscapes rich in texture and color with four-season interest. The end result is not only a beautiful landscape, but one that requires less water, less chemical fertilizer and less maintenance.

[www.seanpapich.com](http://www.seanpapich.com)



tions starting January 1, 2009," Hannah says. S+H is a fully certified solar installer and will even take care of all the paperwork necessary for homeowners to qualify for and obtain Massachusetts rebates.

"When you add in any state rebates such as the Commonwealth Solar rebate, it cuts the net cost of a system by 40 percent of the original cost, reducing the average payback to about nine to eleven years," says Jaime Leef, program manager at S+H.

**“There is a \$2,000 federal tax credit for building a new home to Energy Star standards”**

Leef says there are other metrics to consider. "For example, when you buy a solar electric system you're really just pre-paying for a chunk of electricity. Figure the cost per kilowatt hour, then contrast that with the utility rate. All our spreadsheets show solar beats current utility rates, which will most likely only go up."

S+H has two dozen solar projects in the pipeline, and expects more as homeowners become aware of the tax credit. "People are excited to do something that helps in a significant way to reduce their carbon footprint, reduce their dependency on fossil fuel, and impact climate change," Leef says.

In addition to the federal tax credit for solar, there is a \$2,000 federal tax credit for building a new home to Energy Star standards, according to Matt Dugan, principal at ICF International. ICF is the program administrator for the Massachusetts New Homes with Energy Star program that works with builders and

### simpleHome

Look to simpleHome's customized smart home solutions to optimize energy use in your new or existing home. The company can automate some or all of your home systems—lights, climate, security, pools/spas, irrigation, music/video—with a control system accessed by keypads or touch panels throughout the home and remotely via a Web browser, so you can connect to your systems from anywhere in the world. simpleHome programs typical activity modes based on your schedule so you can control systems with one button. "We make it easy to conserve without having to turn many things on and off," says Mark Komanecy, president. "Energy consumption can be reduced 30 to 50 percent by leveraging all your systems together, and programming options are nearly infinite." [www.simplehome.net](http://www.simplehome.net)



### Soundscapes

Making your home more eco-friendly has never been so easy. Soundscapes offers many products that can be blended into your home to make it more energy efficient without changing your lifestyle. Connected to a central control system, automated lighting and HVAC systems can manage your home's energy use. Simply arming your security system on the way out the door can trigger the system to lower energy use, automatically reducing your heat, air conditioning, media and lighting while you are out. Plus, there's no need to leave the outside lights on; your system will slowly turn them up as the sun sets. [www.soundscapesonline.net](http://www.soundscapesonline.net)



### Staples Cabinet Makers

Craftsman Steve Staples and his team turn out handcrafted furniture art made from reclaimed wood. The wood comes from many sources—old homes being torn down, logs resurfacing from logjams, even an old outhouse—and is turned into tables, cupboards, hutches and more. "We're one step ahead of the wrecking ball," Staples jokes. "Clients like our pieces because of the stories the wood tells: where it came from, how people lived, and sometimes even who lived there. You can see where life was lived across the surface of a table, every imperfection, and that's the beauty of it." Other saved materials-into-furniture include a copper hood from a restaurant stove and marble shower stalls from a high school. "I've even turned an old workbench into a center island for a kitchen and left the vise on it for hanging towels," Staples says. [www.staplescabinetmakers.com](http://www.staplescabinetmakers.com)



utilities to encourage building more energy efficient homes and coordinates incentives from state and federal programs.

"What's more, the Massachusetts New Homes with Energy Star program offers varying incentives for building to different Energy Star levels, up to \$1,250 per home," says Dugan.

Why build to these standards? Energy Star-qualified homes cost less to heat and cool than conventional new homes, and the program gives homeowners a certifiable way to prove their home is energy efficient.

To earn Energy Star status, new homes must be tested by accredited auditors and be at least 15 percent more energy efficient than houses built to the 2004 International Residential Code (IRC). They must also include other energy-saving features that make them 20 percent to 30 percent more efficient than a standard house, such as high-performance windows, tight construction and more effective insulation. For more details, visit [www.energystar.gov](http://www.energystar.gov) and click on "Energy Star New Home Features."

While there, look for rebate programs on materials for your home such as heating and cooling equipment, appliances, windows, insulation, lighting and more. To encourage use of energy efficient products, Energy Star partners occasionally sponsor special offers, such as sales tax exemptions or credits, or rebates on qualified products.

### GET A GREEN MORTGAGE

Even the banking industry gives you credit for building green. Bank of America, for example, offers an environment-friendly mortgage discount program that gives homebuyers up to a \$1,000 credit toward closing costs if their newly constructed property meets Energy Star efficiency requirements.

### Sustainable Construction Services

Sustainable Construction Services creates exquisitely designed and finely crafted green homes to support your healthy lifestyle. Our emphasis on non-toxic building materials, energy-efficient systems and pristine indoor air quality ensures both your comfort and your family's health in a stylish, yet earth-friendly environment.



We strive to be responsible stewards of our precious resources, carefully selecting the most environmentally sound building materials to eliminate off-gassing of harmful fumes, while reducing our demands on the earth. Years of experience in whole-house remodeling, interior design and green build consultations let us tailor plans to your lifestyle, your taste and your budget. [www.sustainableconstructionboston.com](http://www.sustainableconstructionboston.com)

### Terrene

Terrene Sustainable Building Supply distributes high-quality, environmentally responsible green building supplies and interior finishes. Our goal is to expand the availability and use of sustainable building practices throughout New England.



The products at Terrene were carefully selected by our founder. His mission is to reduce our carbon footprint, utilize local businesses, increase productivity and create a safe and healthy environment in which to live and work. At our showroom locations you can see the versatility, quality and aesthetic value that our many products have to offer. With our research and development team hard at work, you will always find the highest-quality and newest technology available.

[www.terrenellc.com](http://www.terrenellc.com)

### TMS Architects

TMS Architects has been working with our clients for twenty-five years, translating their dreams into built reality. These dreams are environmentally sensitive, energy self-sufficient and very special.



We carry with us a strong sense of aesthetics and a deep commitment to the quality and nature of our work. Let us help you interpret the many choices for energy-efficient materials and energy resources as you build a new home or renovate your present house. We can make your project more functional, comfortable and sustainable while adding to its long-lasting aesthetic beauty. Contact us at (603) 436-4274 or view our portfolio online. [www.tmsarchitects.com](http://www.tmsarchitects.com)

McGreavy of the Rhode Island USGBC says the chapter is also opening up discussions with area banks to develop the next generation of green loans. "They could be low- or no-interest mortgages based on projected energy savings and a sophisticated calculation of greenhouse gas emissions. It's beginning to happen in the commercial arena, and we are hoping for some trickle-down to the residential market," she says.

### UPGRADE YOUR INSURANCE

Another green money matter is your homeowners insurance. Ask your insurance company or broker, as several insurance companies have added green offerings in the past year. Boston's Lexington Insurance Company, a member company of American International Group, Inc. (AIG), created "Upgrade To Green Residential" to extend coverage beyond basic replacement value to help homeowners rebuild their homes in an environmentally responsible way.

If an insured home requires complete rebuilding due to a covered event, the policy will pay to recon-

**“Several insurance companies have added green offerings in the past year”**

struct the home to Energy Star Builder Option standards. In the event of a partial loss, the coverage enables homeowners to make repairs adopting Energy Star or equivalent levels of energy efficiency and purchase efficient products and materials. You can find details at [www.lexelite.com](http://www.lexelite.com).

### Window Imagination

As a manufacturer of truly custom drapery hardware, we can create just about any drapery hardware you can imagine, with any finish and custom color matching to complement your decor. And with the many new environmentally friendly materials available, your new hardware can be as green as you wish to be. Most of our rodding and finials are wood and our paints are water-based. We have low-VOC finishes for customers who prefer them, and our topcoats are Green Seal Certified. Let our twenty-five years of experience guide you to a truly custom look.

[www.windowimagination.com](http://www.windowimagination.com)




“We launched Upgrade in New England a year ago and it was so successful we rolled it out nationwide,” says David Valzania, vice president of personal lines at AIG. “It costs a few percentage points more depending on the value and age of the home, but it is a great value and people are excited about it.”

### SEEING IS BELIEVING

Now that you have all kinds of green ideas, take a look at a few in action. Six area builders have teamed up with the Massachusetts New Homes with Energy Star program to construct single-family homes using advanced energy efficiency technologies. It's a unique pilot program called the “Zero Energy Challenge,” geared to help engage homebuilders in using advanced building techniques. A zero energy home is one designed and constructed to use no more energy than it produces.

“The homes will serve as laboratories to help identify innovative and cost-effective building technologies and practices that can be used by all building professionals interested in constructing homes that have close to zero energy use,” says Dugan.

Winners will be chosen based on their project scores on the Energy Star/HERS rating scale. The Home Energy Rating System (HERS) index runs from 100 to 0. Typically, homes built to the prevailing standard would score 100, homes built to the Energy Star standard would score 85, and a zero energy home would score 0.

The project aims to prove that zero energy homes need not look any different, they just perform at a higher level. To see the technology firsthand, you can visit some of the homes during public tours before the end of the competition, and you can follow their progress at [www.zechallenge.com](http://www.zechallenge.com). 

### Wolfers Lighting

Wolfers' new Green Zone in the Allston store gives customers one place to explore and learn about new and rapidly changing green lighting options. Lighting experts will help you cut through the watts versus lumens confusion, and help you choose the right green, sustainable lighting solution for the right location. Here you'll find proven technologies and factual information on everything from compact fluorescents to halogens to LEDs so you can compare technologies. Large displays help you visualize how energy-efficient lighting sources can work in your home, office or store. You'll also find beautiful new fixture designs, proving once again that green can be gorgeous. [www.wolfers.com](http://www.wolfers.com)



### Woodmeister Master Builders

Woodmeister's mission and passion for a sustainable world extends throughout the company—from the millwork shop floor to our clients' homes. We are strongly committed to incorporating state-of-the-art green technologies and strategies in order to build clean, safe, efficient and ecologically conscientious homes for our clients. From burning sawdust and other wood products to produce renewable energy for area customers, to comprehensive shop recycling, to Energy Star certification, Woodmeister is leading the way into a future of responsible environmental stewardship. We invite you to experience the Woodmeister difference. [www.woodmeister.com](http://www.woodmeister.com)



## ACCESS CONNECTIONS

Groton, Massachusetts  
(978) 448-2877  
www.access-connections.com

## ANTIQUE & VINTAGE WOODS OF AMERICA

Pine Plains, New York  
(518) 398-0049  
www.antiqueandvintagewoods.com

## ARCHIA HOMES

Duxbury, Massachusetts  
(781) 934-6164  
www.archiahomes.com

## ARCHITECTURAL DESIGN INCORPORATED

Orleans, Massachusetts  
(888) 495-0606  
www.ad-archts.com

## AUDIO VIDEO INTELLIGENCE

Easton, Massachusetts  
(508) 238-1930  
www.av-intel.com

## AUSTIN DESIGN

Colrain, Massachusetts  
(413) 624-9669  
www.austindesign.biz

## BELISLE DOORS AND WINDOWS

(866) 851-5113  
www.belislewindows.com

## BERKSHIRE PHOTOVOLTAIC SERVICES

Adams, Massachusetts  
(413) 743-0152  
www.bpvs.com

## CATHY KERT INTERIORS

Nashua, New Hampshire  
(603) 595-6340  
www.cathykertinteriors.com

## CHIP WEBSTER & ASSOCIATES

Nantucket, Massachusetts,  
(888) 218-7200  
Boston, (617) 357-0136  
www.cwa-arch.com

## CLOSET FACTORY—BOSTON

Burlington, Massachusetts  
(800) 617-2567  
www.closetfactory.com

## CONECO GEOTHERMAL

Bridgewater, Massachusetts  
(508) 443-5011  
www.coneco.com

## CONNOR HOMES

Middlebury, Vermont  
(802) 382-9082  
www.connorbuiding.com

## CROWN POINT CABINETRY

Claremont, New Hampshire  
(800) 999-4994  
www.crownpointcabinetry.com

## CUSTOM CABLE SERVICES

Woburn, Massachusetts  
(781) 935-0300  
www.customcableservicesinc.com

## CUTTING EDGE SYSTEMS

Westford, Massachusetts  
(978) 392-1392  
www.cuttingedgehome.com

## DC HOME SYSTEMS

Portsmouth, New Hampshire  
(800) 649-3228  
www.dchomesystems.com

## DESIGN LIGHTING & ELECTRICAL SUPPLIES

North Andover, Massachusetts  
(978) 794-1650  
www.designlt.com

## DOVER RUG

Natick, Massachusetts, (508) 651-3500  
Hanover, Mass., (781) 826-0010  
www.doverrug.com

## EARLY NEW ENGLAND HOMES

Bolton, Connecticut  
(860) 643-1148  
www.earlynewenglandhomes.com

## EDWARD R. STEPHEN COMPANY

Billerica, Massachusetts  
(978) 667-6399  
www.erstephen.com

## GARDNER WOODWRIGHTS

North and South Kingstown,  
Rhode Island  
(401) 295-2721  
www.gardnerwoodwrights.com

## INTERACTIVE HOME SYSTEMS

Concord, Massachusetts  
(978) 369-4937  
www.ihomesys.com

## KITCHEN VIEWS CUSTOM

Newton Center, Massachusetts  
(617) 244-8439  
www.kitchenviews.com

## LABARGE HOMES

West Harwich, Massachusetts  
(508) 432-6360  
www.labargerealestate.com

## MASSACHUSETTS ENERGY STAR HOMES PROGRAM

Lexington, Massachusetts  
(877) 378-2762  
www.massenergystarhomes.com

## NSTAR

(800) 592-2000  
www.nstar.com

## OUT OF ORIENT

North Hampton, New Hampshire  
(603) 778-6499  
www.outoforient.com

## PASTICHE OF CAPE COD

West Barnstable, Massachusetts  
(508) 362-8006  
www.pasticheofcapecod.com

## POLHEMUS SAVERY DASILVA ARCHITECTS BUILDERS

Chatham, Massachusetts, (508) 945-4500  
Osterville, Mass., (508) 428-1800  
www.psdab.com

## PONDERS HOLLOW CUSTOM MOULDING & FLOORING

Westfield, Massachusetts  
(413) 562-8730  
www.pondershollow.com

## RIVERBEND & COMPANY

Groton, Massachusetts  
(978) 448-8555  
www.riverbendandcompany.com

## RUNTAL NORTH AMERICA

Ward Hill, Massachusetts  
(800) 526-2621  
www.runtalnorthamerica.com

## S + H CONSTRUCTION

Cambridge, Massachusetts  
(617) 876-8286  
www.shconstruction.com

## SAGE BUILDERS

Newton, Massachusetts  
(617) 965-5272  
www.sagebuilders.com

## SEAN PAPICH LANDSCAPE ARCHITECTURE

Hingham, Massachusetts  
(781) 741-5455  
www.seanpapich.com

## simpleHome

Westborough, Massachusetts,  
(508) 616-0952  
Stowe, Vermont, (802) 760-6393  
www.simplehome.net

## SOUNDSCAPES

Boscawen, New Hampshire  
(603) 783-6631  
www.soundscapesonline.net

## STAPLES CABINET MAKERS

Plainville, Massachusetts  
(508) 695-1155  
www.staplescabinetmakers.com

## SUSTAINABLE CONSTRUCTION SERVICES

Sherborn, Massachusetts  
(508) 653-7274  
www.sustainableconstructionboston.com

## TERRENE

Acton, Massachusetts, (978) 263-8311  
Newton, Mass., (617) 244-6200  
www.terrenellc.com

## TMS ARCHITECTS

Portsmouth, New Hampshire  
(603) 436-4274  
www.tmsarchitects.com

## WINDOW IMAGINATION

Melrose, Massachusetts  
(781) 665-1885  
www.windowimagination.com

## WOLFERS LIGHTING

Waltham, Massachusetts,  
(781) 890-5995  
Allston, Mass., (617) 254-0700  
www.wolfers.com

## WOODMEISTER MASTER BUILDERS

Holden, Massachusetts,  
(800) 221-0075  
Nantucket, Mass., (508) 228-6611  
Newport, Rhode Island, (401) 608-2543  
www.woodmeister.com